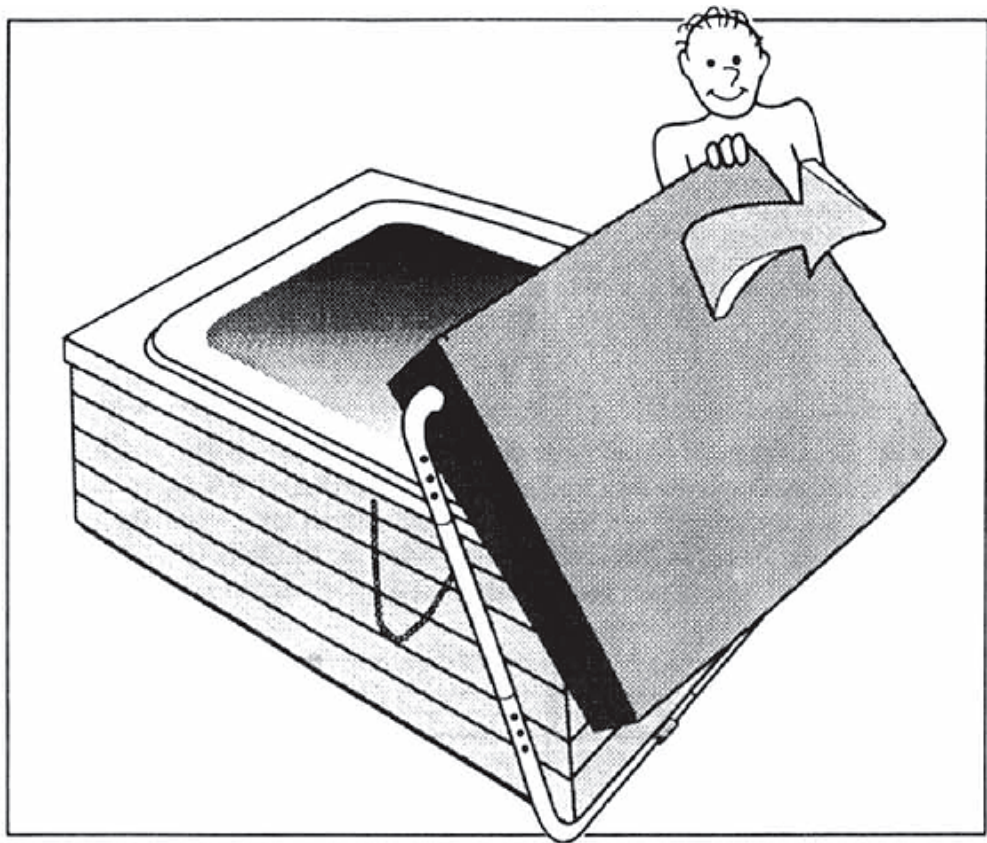


# **SPA**ccessories

Spa & Hot Tub Necessities

## ***Cover Classic Lifter*** ***Installation & Use Manual***





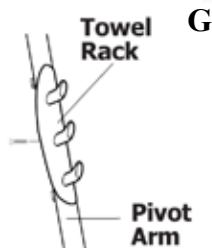
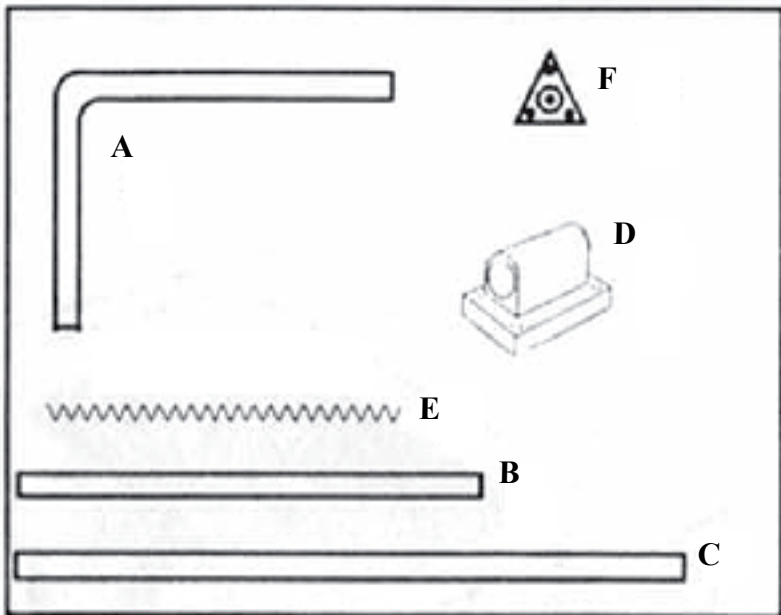
The Premium Cover Lifter adjusts to fit most square/rectangular spas up to 99" in width. When assembled it forms a rectangular shape. The Premium Cover Lifter attaches to the back of the spa cabinet, either on the back wall of the cabinet or on the pedestal base. The Bridge Arm (C) lies across the spa cover parallel to the seam (hinge) of the cover and is "captured" when the cover is folded back over it. Once the cover is folded back, simply lift back on the Side Arm and the Premium Cover Lifter will lift the cover off the spa and hold it in an upright position behind the spa. Pilot holes are pre-drilled in the Corner Pieces (A). Once sized to your spa, the self-tapping screws will penetrate the Bridge Arms and Side Arms (B) to lock the tubing in place. Before assembling the Premium Cover Lifter, check the components in the box against the Parts List to insure all parts are present. You will need a power/cordless drill with Phillips bit and a tape measure.

**USE OF THIS DEVICE WITH OLD, WATERLOGGERD COVER  
MAY DAMAGE COVER AND LIFTER**

**NOTE: THERE MUST BE 18" CLEARANCE BEHIND THE SPA.**

# PARTS LIST

Part	Description	QTY
A	Corner Piece	4
B	42" Side Arm	2
C	59" Bridge Arm	2
D	Mounting Block	3
E	Retaining Chain	2
F	Chain Bracket	2
	Metal Screw #10 x 5/8"	34
	Wood Screw #8 x 5/8"	6
	Wood Screw #8 x 1-1/4"	8
G	Towel Holder	1



1. Lay out the components in the shape of a rectangle as shown below (Fig A). There are 2 sets of Corner Pieces (A). They have been drilled so that the top left and bottom right are the same as the top right and bottom left. When assembling, position all Corner Pieces so that the pre-drilled holes are FACING UP. NOTE: The LONG SIDE of the Corner Pieces goes Across the spa. The SHORT side goes on each SIDE of the spa.

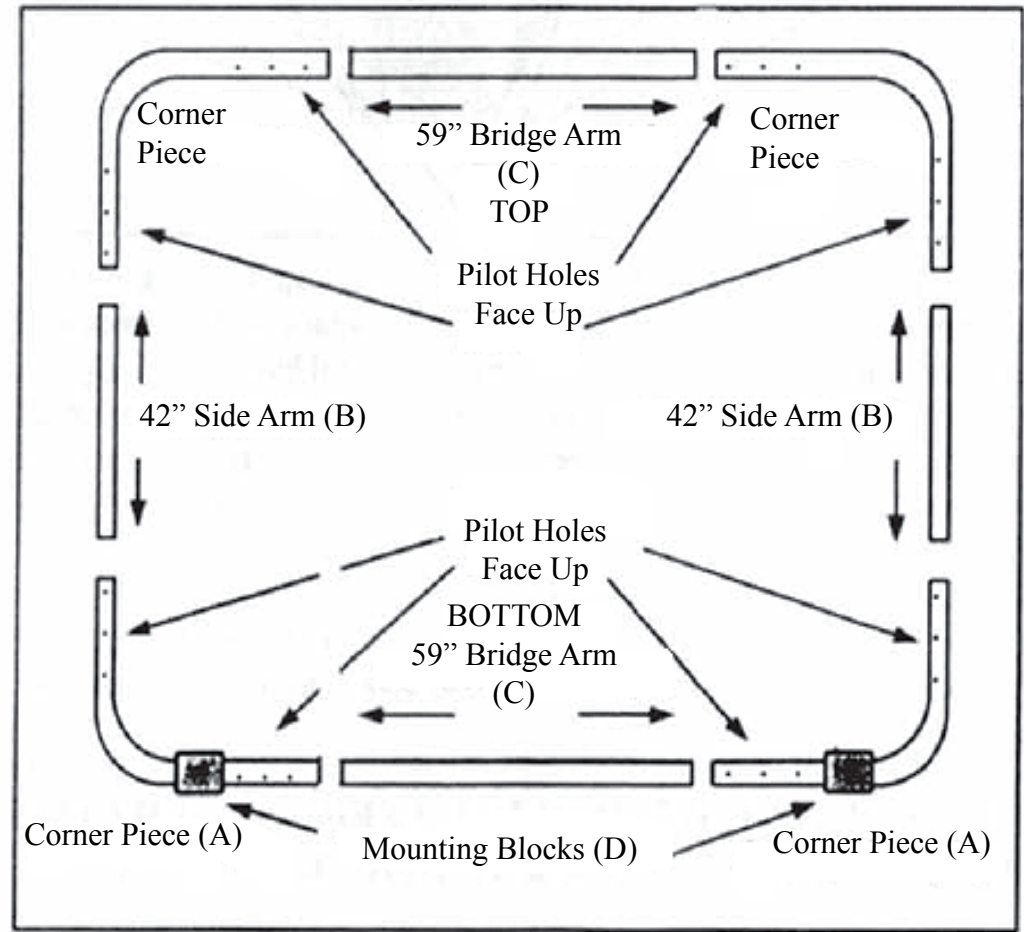


Fig. A

2. Side Mounting Blocks (D) over the LONG SIDE of each of the two bottom Corner Pieces (A) as shown in Fig A. Remember, EACH CORNER PIECE MUST HAVE THE PRE-DRILLED HOLES FACING UP.
3. Slide one of the 59" Bridge Arms (C) into each of the two Bottom Corner Pieces (A) as shown in Fig A. Repeat the process for the Top Corner Pieces. You now have two assembled pieces, the top and bottom sections.
4. Measure the maximum width of your spa. Slide the 2 Corner Pieces in on the each Bridge Arm until the width matches the width of your spa cabinet plus 3". Be sure to slide the Bridge Arm an equal distance into each Corner Piece. Make sure Mounting Blocks are outboard of all screws. With the assembled pieces laying flat on a level surface, secure the Bridge Arms to the 4 Corner Pieces with the enclosed #10 x 5/8 self-drilling screws. Tighten all screws completely. See Fig. B.

1.5" clearance between spa and inside arm of Premium Cover Lifter

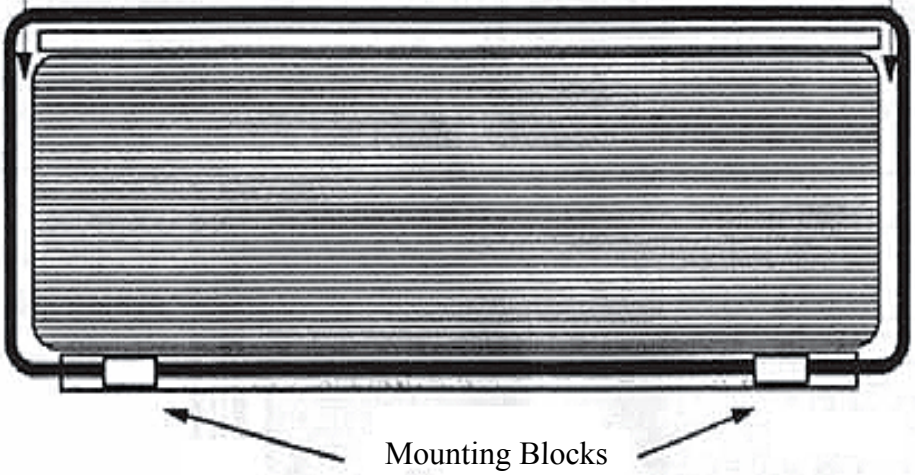


Fig. B

5. Next connect these two assembled pieces together with the Side Arms (B) by sliding the Side Arms into each of the four Corner Pieces as shown in Fig. A DO NOT secure with screws yet.

6. With the Spa Cover in place on your Spa, lay the assembled rectangle assembly on the spa with the Mounting Blocks at the bottom as shown in Fig. C. Remember, screws face up.

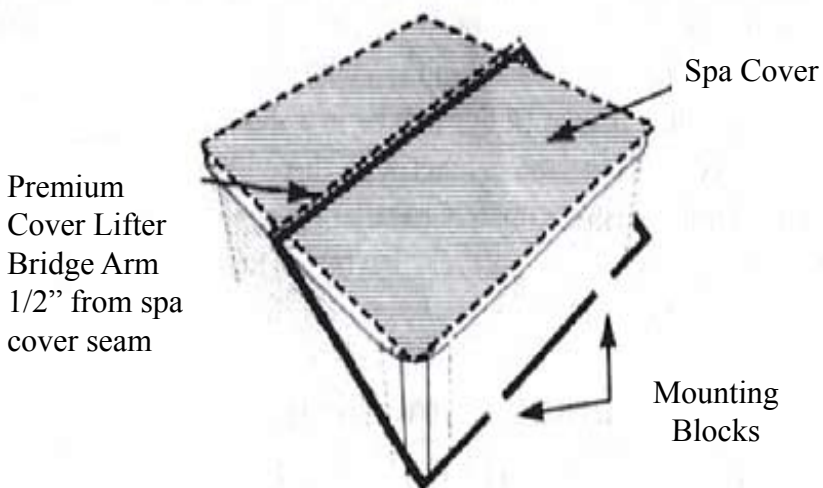


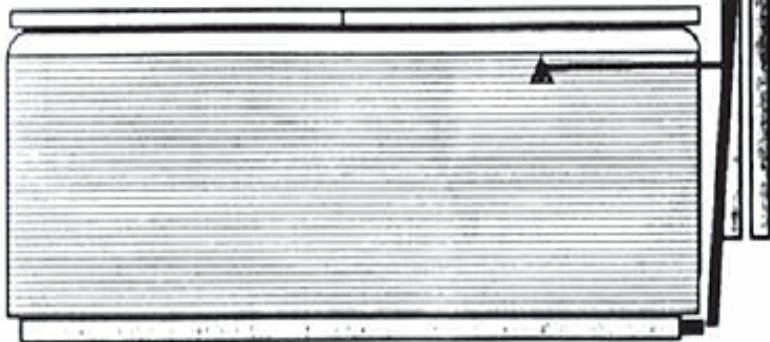
Fig. C



7. Mount the Mounting Blocks as wide and as low as possible. Attach the two Mounting Blocks to the cabinet pedestal or base of spa cabinet if there is no pedestal, with the 1-1/4" Wood Screws provided. NOTE: Mounting Blocks may be attached directly to deck surface or use Universal adaptor bracket available from your dealer for round, oval or octagonal spas.
8. Pull out/Push in on the top Corner/Side Arm assembly to adjust the Cover Butler so that the Bridge Arm is about 1/2" behind the fold seam of the spa cover as shown in Figure C. The Bridge Arm must be parallel to the cover fold seam. Be sure to slide the Side Arms an equal distance into each Corner Piece. Before you attach the side arms into the top corners, decide which side you would like the towel holder to be attached to. Line up the holes on the towel holder with the holes on the side/corner pieces. Secure the Side Arms to each Corner Piece with #10 x 1-1/4" screws. Use 3 screws per connection for all connections.
9. Center Premium Cover Lifter on spa so that there is approximately 1-1/2" clearance on each side between spa and the inside of Premium Cover Lifter tubing. Screw in one #10 x 5/8" self-drilling metal screw just to the outside of each Mounting Block to lock Premium Cover Lifter into this position and prevent it from moving side to side. See Figure B.

Attach retaining chain to Premium Cover Lifter and spa cabinet

18" clearance behind spa



10. Insert one #10 x 5/8" self-drilling metal screw through the end of one Retaining Chain (D). Fold spa cover back and lift cover with Premium Cover Lifter until cover is hanging vertically behind spa. Attach Retaining Chain to OUTSIDE of Side Arm of Premium Cover Lifter approximately parallel with top of spa cabinet. Tighten screw securely but make sure that chain can move freely on screw shaft. Attach the other end of the chain to the center hole in the Chain Bracket (F) with a #10 x 5/8" self-drilling metal screw. With cover hanging vertically behind spa with about 1" between spa cover and the back of the spa cabinet (Premium Cover Lifter will be in a slightly over-vertical position), attach the Chain Bracket to the spa cabinet with three #8 x 5/8" wood screws. The Retaining Chain should be approximately parallel with the ground, but this is NOT critical to operation. Tighten Screw securely, but make sure chain can move freely on screw shaft. See Figure D.

**INSTALLATION IS NOW COMPLETE**

# LIMITED LIFETIME WARRANTY

**SPAccessories** warrants this product to be free from defects in workmanship and material, under normal use and service conditions, for a Limited Lifetime Warranty. This warranty extends only to the original purchaser. **SPAccessories'** obligation under this warranty is limited to replacing or repairing, at **SPAccessories'** option, the product at one of its authorized service centers. All products for which warranty claim is made must be received by **SPAccessories** at one of its authorized service centers with all freight and other transportation charges prepaid, accompanied by sufficient proof of purchase. All returns must be pre-authorized by **SPAccessories**. This warranty does not extend to any product or damage to a product caused by or attributable to freight damage, abuse, misuse, improper or abnormal usage or repairs not provided by a **SPAccessories** authorized service center, products used for commercial or rental purposes, or products used as store display models. No other warranty beyond that specifically set forth above is authorized by **SPAccessories**.

**SPAccessories** is not responsible or liable for indirect, special or consequential damages arising out of or in connection with the use or performance of the product or damages with respect to any economic loss, loss of property, loss or revenues or profits, loss of enjoyment or use, costs of removal, installation or other consequential damages of whatsoever nature. Some states do not allow the exclusion or limitation of incidental or consequential damages. Accordingly, the above limitation may not apply to you.

The warranty extended hereunder is in lieu of any and all other warranties and any implied warranties of merchantability or fitness for a particular purpose is limited in its scope and duration to the terms set forth herein. Some states do not allow limitations on how long an implied warranty lasts. Accordingly, the above limitation may not apply to you.

This warranty gives you specific legal rights. You may also have other rights which vary from state to state.

**SPAccessories**, 6848 S. Airport Rd., West Jordan, UT 84084



Spa & Hot Tub Necessities

---

SPAccessories, LLC.  
11900 N. La Canada Dr. #69792  
Tuscon, AZ 85737